

PSM-19/144/4U MODULAR PATCH PANEL

FEATURES:

- capacity up to 12xMPK-12 modules
- quick and reliable fibre links configuration
- easy access for performing control and maintenance measurements
- height 4U, includes integrated 1U patchcord cable or outdoor cable loose tube excess lengths tray
- outdoor cable loose tubes organiser allows fixation of guiding protective tubes routed to the installed modules
- outdoor cables and patchcords can be routed into the panel from the left or right side
- installation in 19" racks with minimum depth of 300 mm, e.g. STP-19
- installation in 21" and/or 23" racks with the use of AD-19 adapters

TECHNICAL SPECIFICATIONS:

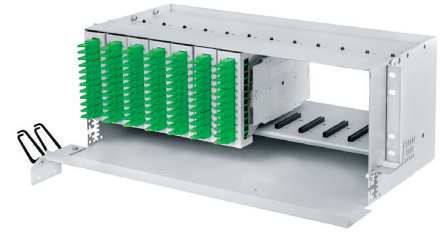
| | PSM-19/144/4U |
|---|---------------|
| number of splice trays | max. 12 x KSQ |
| maximum number of splices | 144 |
| adapter capacity | 144 |
| connector standard | E-2000, SC |
| LC Duplex adapter capacity | 96 - 144 |
| recommended pigtail length [m], 0.9 mm buffered fibre | 1,5 |
| number of outdoor cable entries | 12 |
| dimensions: width/height/depth [mm] | 488/175/290 |
| weight [kg] | 3,7 |
| number of modules | 12 |
| module type | MPK-12 |
| mounting brackets position | front/pród |

ORDERING:

PSM-19/144/4U - Modular Patch Panel, height 4U

THE SET INCLUDES:

- outdoor cable loose tubes and patchcord excess lengths tray
- universal adapter for front or rear fixing in 19" racks
- ingoing outdoor cable loose tubes organiser, outgoing pigtails organiser
- cable ties and cable bands
- installation and handling instructions
- installation kit



Modular Patch Panel PSM-19/144/4U