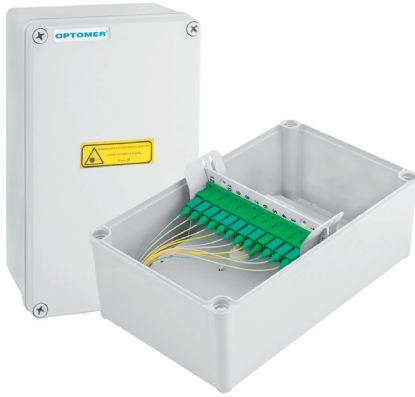


PSH-3 OUTDOOR FIBRE OPTIC DISTRIBUTION BOX



PSH-3 OUTDOOR FIBRE OPTIC DISTRIBUTION BOX/12

FEATURES:

- wall mounted distribution box adapted to be mounted on the outside of the building
- for application in industrial environments and/or telecom manholes
- 48 fibre capacity from 8 cable entries
- IP65 (PSH-3/12), IP66 (PSH-3/24) rated environmental protection
- full front access to the splice tray

THE SET INCLUDES:

- splice tray KS-24 or KSQ
- cable gland DP 16 H
- rubber cable gland
- cable ties
- installation and handling instructions
- installation kit

ADDITIONAL EQUIPMENT:

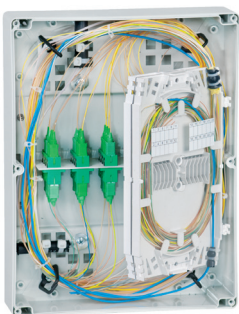
- set of wall fixing screws
- hinges

TECHNICAL SPECIFICATIONS:

	PSH-3/12	PSH-3/24
number of splice trays	1 x KSQ	2 x KS-24
maximum number of splices	12	48
adapter capacity	12	24
connector standard	E-2000, SC	E-2000, SC, LC Duplex
recommended pigtail length [m], 0.9 mm buffered fibre	1,5	
number of outdoor cable entries	2	8
maximum diameter of input cable [mm]	14	18
dimensions: width/height/depth [mm]	140/230/90	230/300/87
weight [kg]	0,7	0,9
housing material/colour	ABS or PC/RAL 7035	
mechanical protection IK	IK 08	
environmental protection IP	IP65	IP66

ORDERING:

PSH-3/12/E/SC - Outdoor Fibre Optic Distribution Box for 12 pigtails and 12 adapters E2000 or SC



PSH-3 OUTDOOR FIBRE OPTIC DISTRIBUTION BOX/24