

FIBRE OPTIC DISTRIBUTION BOX PSL/DIN

FEATURES:

- distribution box designed for splicing
- for installation in telecommunication or electrical cabinets, directly on DIN rail (35mm width).
- possibility of mounting splice protectors inside the box
- possibility of entering cable through cable gland DP type
- made of steel covered with corrosion - resistant powder

THE SET INCLUDES:

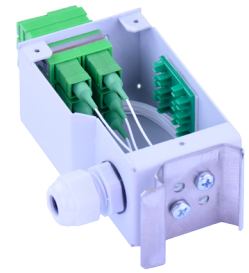
- outer housing
- splice protector holder
- cable band
- protective band for 900 um buffered fibre
- cable gland
- cable guide
- DIN rail bracket

TECHNICAL

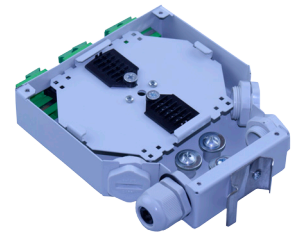
	PSL-6/DIN	PSL-12/DIN
maximum number of splices	6	12
adapter capacity	6	12
connector standard	SC Duplex	
number of cable inputs/outputs kabla	1	4
maksymalna średnica kabla [mm]	7	14
recommended pigtail length [m], 0.9 mm buffered fibre	1	1,5
dimensions width/height/depth [mm]	35/50/85	132/34/148

ORDERING:

PSL/DIN - fibre optic distribution box for DIN rail



*Fibre Optic Distribution Box
PSL-6/DIN*



*Fibre Optic Distribution Box
PSL-12/DIN*