

POLE/WALL MOUNTING BRACKETS

BRACKET OH-1

- enables mounting FRBU enclosure
- for mounting a closure, two OH-1 brackets are needed
- metal crimping tie
- base made of epoxy powder coated, zinc plated steel sheet

BRACKET OH-2

- enables mounting enclosures MUF-1, MUF-2
- for mounting an closure, two OH-2 brackets are needed
- enables mounting on walls or WS-1 cantilevers
- Zinc plated, epoxy powder coated steel bracket

BRACKET OH-3

- enables mounting enclosures UFC, MUF-1, MUF-2, MUF-3 and FDN
- for mounting a closure, one OH-3 bracket is needed
- enables mounting on walls or WS-1 cantilevers
- made of aluminium alloy, epoxy powder coated
- plastic or metal cable ties
- supporting c-shaped bars (for mounting on pylons) - steel, zinc plated
- enables mounting on pylons

BRACKET OH-4

- made of aluminium alloy, epoxy powder coated
- dedicated for MUF-1 and MUF-2 closures to be mounted on pylon towers
- allows to adjust the angle of enclosure
- range of profiles of pylons: from 50 x 50 mm to 100 x 100 mm

BRACKET OH-6

- quick installation of FDN splice closures
- simple fixing to the wall
- stainless steel bands, powder coated aluminium base

WS-1 BRACKET

- application in fiber closures MUF-1, MUF-2
- made of aluminium or blaze zinc steel
- STANDARD KIT a bracket for setting the whole system on the pole
- an accessory for OH-2 bracket

EQUIPMENT:

- bracket/clasp
- mounting kit



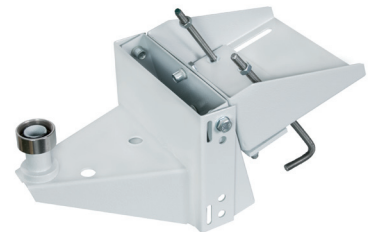
OH-1



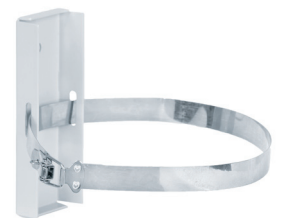
OH-2



OH-3



OH-4



OH-6



WS-1

	OH-1	OH-2	OH-3	OH-4	OH-6
application	FRBU	MUF-1, MUF-2	UFC, MUF-1, MUF-2, MUF-3, FDN	MUF-1, MUF-2	FDN
bracket diameter [mm]	115-130	160	260	pivot ø20	207
pole mounting	2 holes ø8	2 holes ø9	5 holes ø10	-	2 holes ø8
holes span [mm]	175	240	90	135 (hooks spacing)	100
base [mm]	30x205	30x275	45x400	335x191x185	65x170

	WS-1/150	WS-1/200	WS-1/300
dimensions [mm]	650/150		
pole diameter [mm]	150	200	300
fixing	2x2 holes ø9 mm		

ORDERING:

OH-6 - Bracket for optical splice closures

