

SPLICE TRAYS

FEATURES:

- provide mechanical protection for 12 to 24 splices
- used in fibre optic equipment for organisation of fibre optic splices
- accept passive optical devices e.g. splitters, couplers
- plastic splice trays KS-24, KSH, KS-Q, ACC1341
- FSP-45 splice protectors recommended for KS-Q, KSH, ACC1341 splice trays
- OS-60 splice protectors recommended for KS-3E splice trays OS-60

THE SET INCLUDES:

- splice tray cover
- cable bands and cable ties

ADDITIONAL EQUIPMENT:

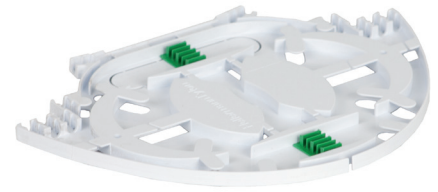
- splice protectors FSP-45 and OS-60
- designator fiber OZRWŁ
- designator close tube OZNL

TECHNICAL SPECIFICATIONS:

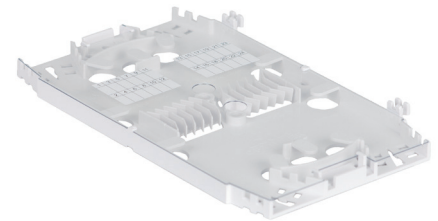
	KS-Q	ACC1341 Hellapon	KSH	KS-24	SMF
number of splices	12	16	12	24	
applications	MPS-19/12, MPS-19/12/W, PSH-3, PS-8	FRBU	UFC, BPK-19/24, BP-19	PS-3, PS-5, PS-4, PS-19, PSH-2, PSH-3/24, MK-5, BPK-19/72, MUF-1, MUF-2, PSS-3, PSS-4	FDN, UFC
dimensions: width/height/ depth [mm]	155/92/8	236/92/8	204/145/7	200/115/10	195/148/7
splice protectors		FSP-45		OS-60	FSP-45

ORDERING:

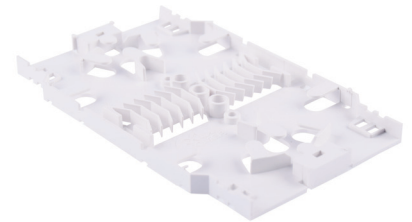
KS-24 - splice tray for 24 splices



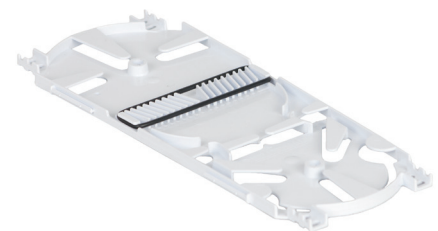
KSH



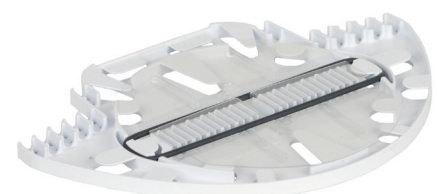
KS-24



KS-Q



ACC1341



SMF